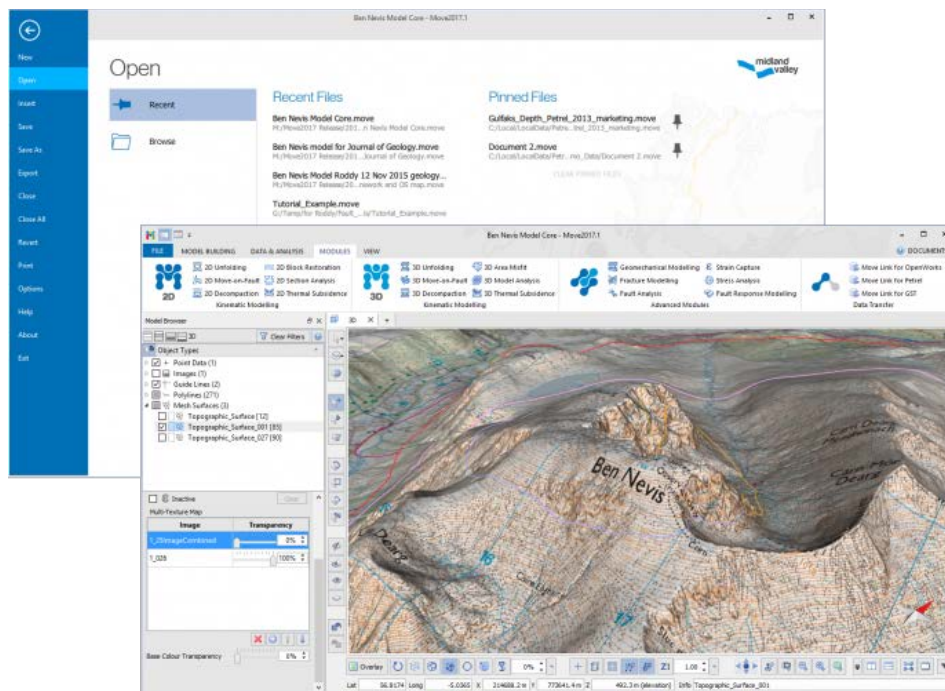


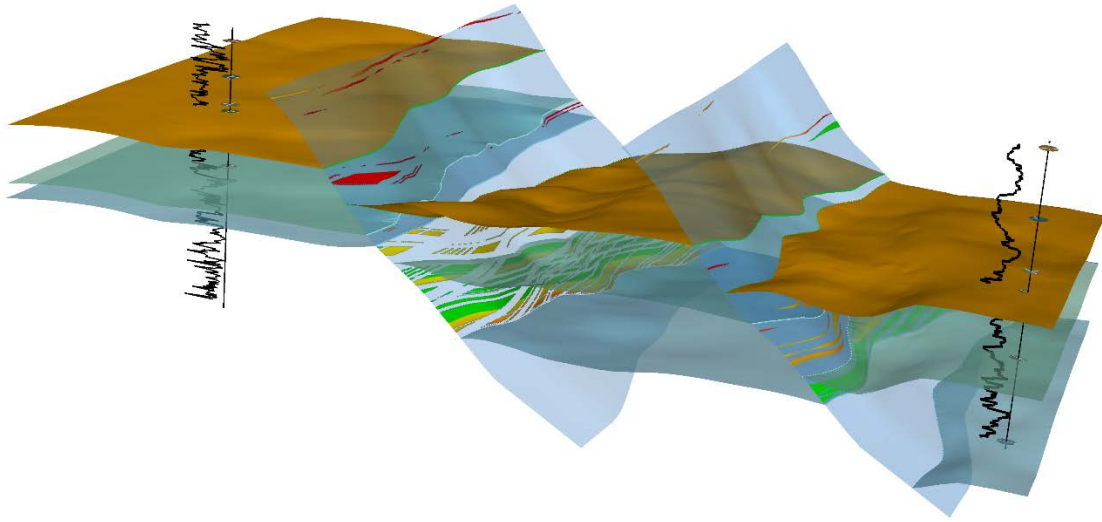
Move2017.1 was released as planned on December 16th and is now available for download to all our maintained clients and academic users. This 2017 version of Move includes substantial new features, as well as improvements to the existing functionality and usability.



What's new in the Move2017 suite

- The launch of a sleek, ribbon-style interface in Move.
- The first release of the Move Knowledge Base - a single, offline, searchable resource containing all the Move Help Pages, Tutorials, and release documentation.
- The new 3D PDF export option revolutionises the sharing of Move files.
- 2D and 3D Kinematic Modelling modules now have enhanced interactivity in the Unfold, Move-on-Fault and Construct Horizons from Fault tools.
- Support for user-defined compaction curves in the Decompaction tools.
- New to Fault Analysis is the integration of the rapid restoration functionality along with a Fault History diagram, additional seal proxies and area analysis.
- In the Stress Analysis module, stress inversion calculations now honour slip sense on fault planes.

And there's so much more.



[Read more on the new functionality here >>](#)

[Click here for the release documentation >>](#)