



Petroleum Experts

SOFTWARE • CONSULTANCY • TRAINING



DIGITAL FIELD MAPPING

It's very easy to get started in the world of digital mapping. Petex has developed two applications for field geologists: FieldMOVE Clino for Apple and Android smartphones, and FieldMOVE for larger touchscreen tablet devices using the iOS or Android operating systems.

Both applications have been designed by geologists for geologists and users will find the interfaces familiar and intuitive. The applications contain some short help pages and a more detailed user guide covering all aspects of the functionality.

We have also produced some online video tutorials - available on the website - for the FieldMOVE Clino app that will help you to set up a project, collect data, view and edit your data and then export your project for further analysis.

Fieldmove Clino

Fieldmove

FieldMOVE Clino

FieldMOVE Clino is a digital compass-clinometer for gathering geological data on your smartphone.

The app allows you to use your phone as a traditional hand-held bearing compass, as well as a digital compass-clinometer for measuring and recording the orientation of planar and linear features in the field.

You can also capture and store geo-referenced text notes and photographs within the app.

The Clino app is free to download, but users can purchase an upgrade which provides access to a bigger library of geological symbols and enables data

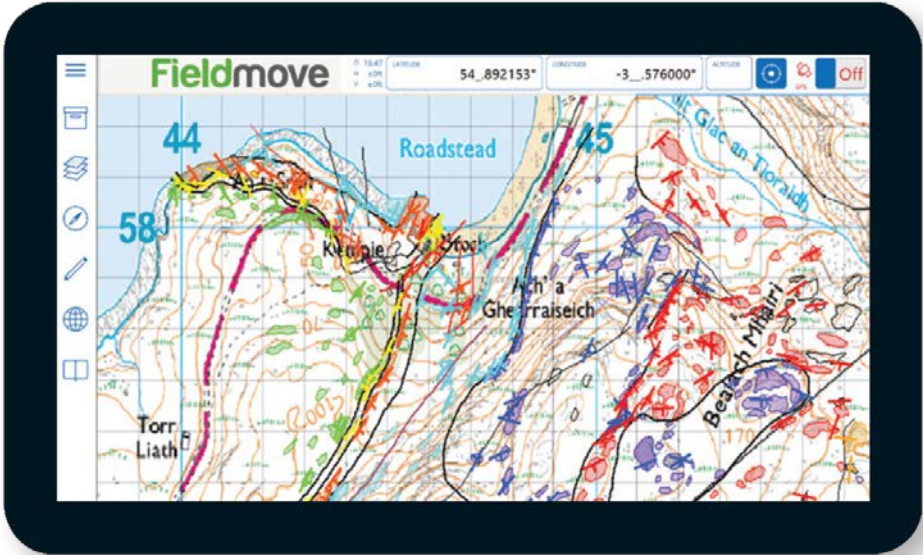


to be plotted on a stereonet. In the iOS version you can also create lines and polygons on your chosen basemap while you are in the field.

The FieldMOVE Clino app allows you to collect data ten times faster than with traditional methods.



Fieldmove Clino



FieldMOVE



The new version of FieldMOVE contains all of the functionality in the Clino app, but this has been presented in a map-centric format for use on larger touchscreen tablets. When you have collected sufficient data then you can use the new drawing tools, which include a virtual mouse for precision drawing, to create geological boundaries, fault traces and other linework on your basemap. It is also possible to create simple polygons to show the distribution of different rock types.

The linework that you create in FieldMOVE (and in Clino) is fully geo-referenced and this information is preserved when the project is exported to other applications. Getting your project out of the application is straightforward. Data can be exported in three different formats: a CSV file (comma-separated values, similar to an Excel spreadsheet), a Move™ file for direct import into Petex's Move software for model building and analysis, and as a Google Earth (.kmz) file.



SUMMARY OF FEATURES

- Digital compass clinometer with an intuitive interface
- Automatic or manual data entry
- User defined list of rock units or stratigraphy
- Digital notebook and camera within the app
- Create sketches and annotate photographs**
- Import your own basemaps to work offline or use online map services
- Automatic positioning using the GPS in your device or manual over-ride
- Easy editing of data and projects
- Expanded library of symbols for planar and linear features
- Stereonet display of geological data
- Draw* contacts, faults and outcrop polygons on your chosen basemap
- Edit linework by moving, adding and deleting points**
- Export your data as .move, KMZ or CSV files to other applications such as MOVE

**The drawing tool in FieldMOVE Clino is only available for the iOS version. FieldMOVE is designed for Apple and Android and contains a virtual mouse which enables users to produce detailed linework.*

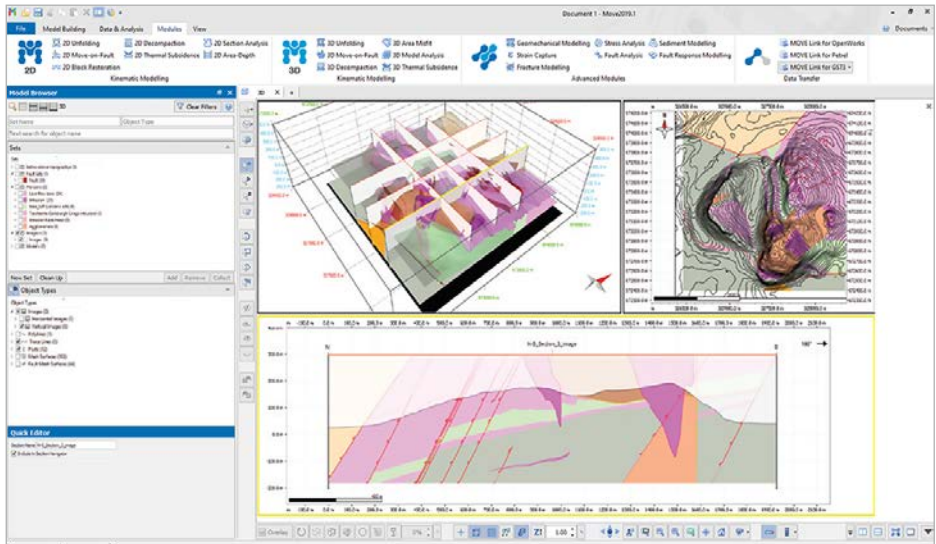
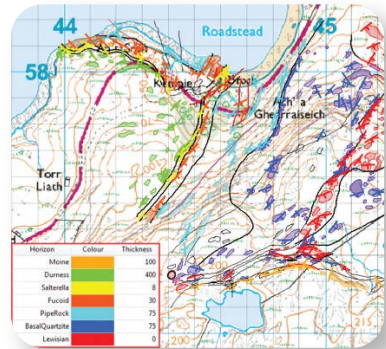
***FieldMOVE only*

Go Mapping

The ability to capture all of your data – geological measurements, notes, photographs and linework – in a single application significantly reduces the amount of field equipment that the geologist needs to carry. Errors are no longer introduced during the “inking-in” of field slips or when a paper map is being digitised and more time can be spent thinking about the geology in the field and testing alternative scenarios.

Being able then to export your data with one click to Move or your chosen file format frees up more mapping and thinking time to ensure you get the most from your field season.

We hope that you find these applications useful and we'd be delighted to hear from you if you have any comments or suggestions for further improving the functionality in FieldMOVE and FieldMOVE Clino. For more information go to: www.petex.com



SYSTEM REQUIREMENTS

FieldMOVE Clino

The FieldMOVE Clino app has been built on the iOS and Android phone operating systems and will only work on a smartphone using one of these systems. The app will scale up from an iPhone to an iPad or iPad mini, but it will not run on 7" or larger Android smartphones or tablets. There is currently no Windows version of the FieldMOVE Clino app.

FieldMOVE

FieldMOVE has been built on Qt, which is the same development platform used by Move. The application will run on Apple (iPad and iPad mini) and Android tablets, but it cannot be used on smartphone devices. There is currently no Windows version of the FieldMOVE app.

Sensors

FieldMOVE and FieldMOVE Clino both rely on three sensors inside your device, a magnetometer, a gyroscope and an accelerometer, and together these sensors can be programmed to measure the orientation of planar and linear features in the field. All three sensors are installed as standard in iPhones and iPads, but are not always present in Android devices. You should always check your device to make sure that all three sensors are present and that the compass and the clinometer are giving accurate readings before starting to collect data. You can choose to manually enter data if you do not trust the internal sensors, or if you are using a traditional hand-held compass clinometer.

AVAILABLE TO DOWNLOAD FROM THE FOLLOWING APP STORES



Petex House
10 Logie Mill
Edinburgh
EH7 4HG
Scotland, UK

Tel: (44) 131 474 7030

Fax: (44) 131 474 7031

Email: edinburgh@petex.com

www.PetroleumExperts.com



Petroleum Experts
